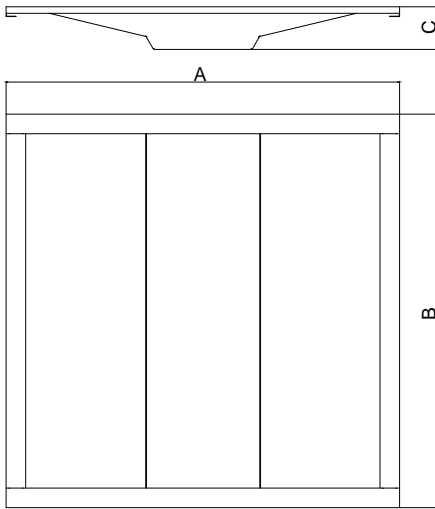


# SPECIFICATION

## LED TROFFER FIXTURE(New Construction)



Maximum overall	A	B	C
2x2ft	603mm	603mm	70mm
2x4ft	603mm	1213mm	70mm



## FEATURES

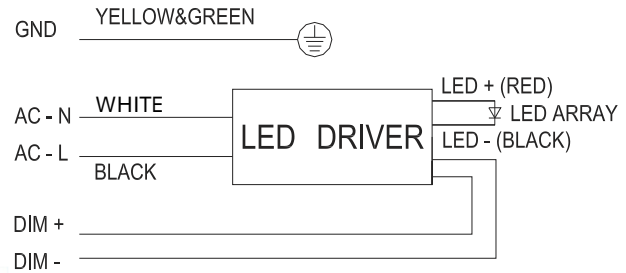
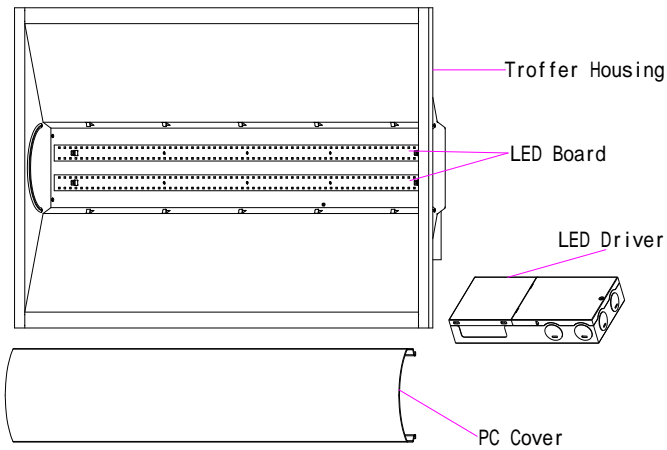
Input voltage:	AC100-277V
Operating frequency:	50/60Hz
Power factor:	≥ 0.90
Ambient temperature range:	-20°C ~+45°C
Color Temp:	3000K~5000K
Dimmable:	YES
THD:	<20%
IP Rating:	IP40
CRI:	>Ra80
Beam angle:	120°

- Cloud series led troffer gives >125lm/W
- Cloud series troffer can work with emergency power pack.
- Suitable for Damp Location
- 5 years' warranty .

## PARAMETER

Length	Product code	Certification	CRI	Description Wattage	Dimmable	Lumens 3000-5000K	Packing/carton	G.W./carton
2x2ft	ZS-TF2x2-Q01-25-CC	ETL,FCC,CE	>80	25W	0-10V dimming	3100 lm	650×650×180mm 2 pieces 1X40HQ Loading=1,850pcs	9kg
	ZS-TF2x2-Q01-30-CC	ETL,FCC,CE	>80	30W	0-10V dimming	3900 lm		
	ZS-TF2x2-Q01-40-CC	ETL,DLC,FCC,CE	>80	40W	0-10V dimming	5200 lm		
2x4ft	ZS-TF2x4-Q01-35-CC	ETL,DLC,FCC,CE	>80	35W	0-10V dimming	4550 lm	1260×650×180mm 2 pieces 1X40HQ Loading=930pcs	16kg
	ZS-TF2x4-Q01-40-CC	ETL,DLC,FCC,CE	>80	40W	0-10V dimming	5200lm		
	ZS-TF2x4-Q01-50-CC	ETL,DLC,FCC,CE	>80	50W	0-10V dimming	6250 lm		

# WIRING DIAGRAM

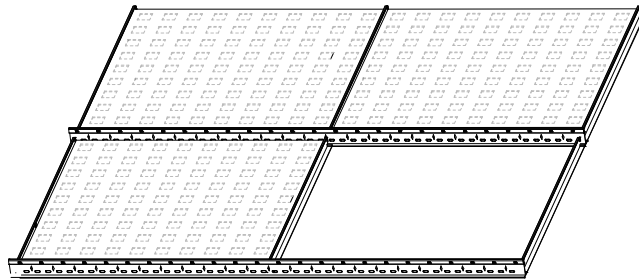


## Electric Shock Attention

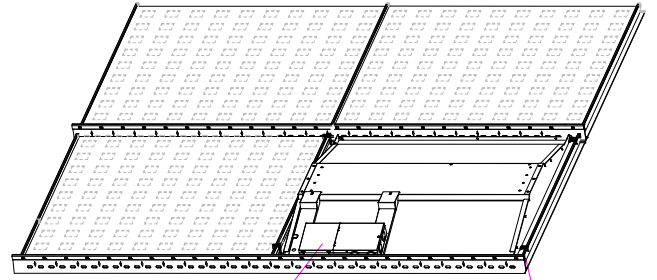
Ensure the power supply has been cut off before connecting the wire, and all wiring and installation of this product are required to be operated by professionals.

## INSTALLATION INSTRUCTION

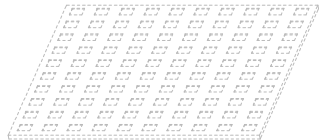
Step1



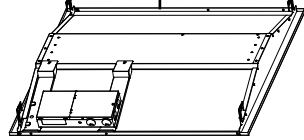
Step2



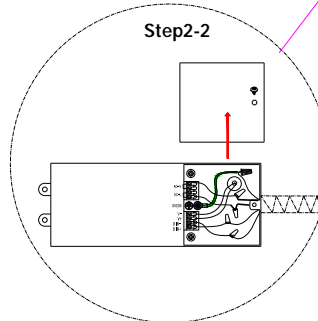
Step1-1



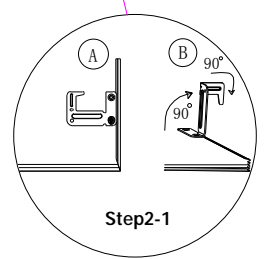
Step1-2



Step2-2



Step2-1



**Step1:** Turn off power before installation, and take one ceiling off. Bend hang buckle by 90°, making it vertical to the rear cover of panel light (Figure 2-1A). Bend hang buckle top part by 90° (Figure 2-1B).

**Step2:** Place the panel light into the T-bar. Ensure the lights are attached to the ceiling. (Figure 2-1)

**Step3:** Open the cover of junction box, connect the AC wire correctly (L=black, N=white). the ground connect to the green wire. (Figure 2-2)

## Warning:

Ensure the power supply has been cut off before connecting the wire, and all wiring and installation of this product are required to be operated by professionals.